

Ireland

The US Gateway to Europe

Patrick McGee
VP Engineering & Industrial Technologies

About IDA Ireland

- IDA Ireland is the **Foreign Direct Investment Agency** for Ireland
- It is a state agency 100% funded by the Irish Government.
- Founded in **1949**
- IDA's focus is to attract foreign investment that is of high value, requiring high skill levels and a sophisticated business environment.

Objectives & Key Areas of Focus

- Attract new investment from around the world for Ireland
- Provided assistance to existing clients to expand and develop their business in Ireland
- To create valuable & sustainable employment
- Our services are **FREE OF CHARGE!**

```

graph TD
    A[Government] --> B[Department of Enterprise, Jobs & Innovation]
    B --> C[IDA Board]
    C --> D["20 Overseas Offices  
9 Sectoral Divisions  
10 Irish Offices"]
    D --> E[300 staff]
    
```

IDA Ireland - Global Reach

Foreign Direct Investment

Key Pillar of Economic Growth Strategy

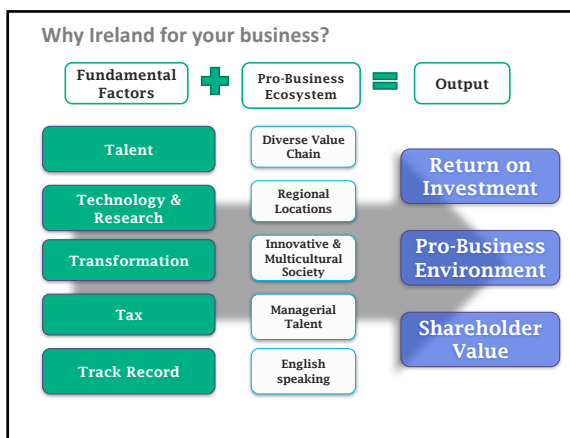
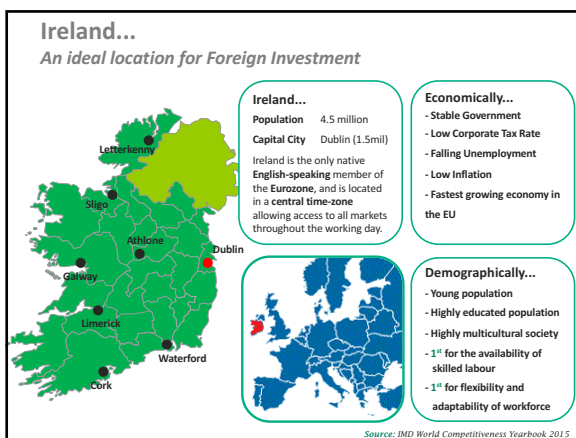
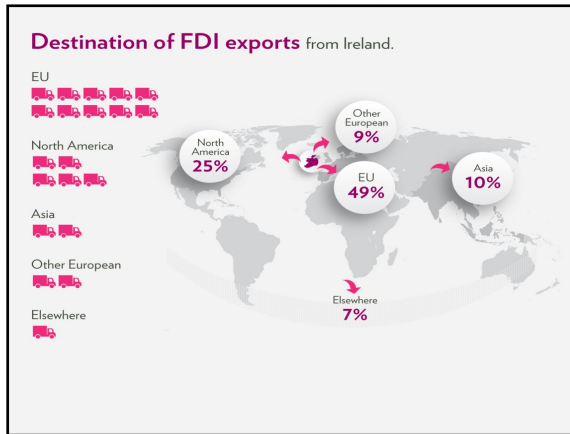
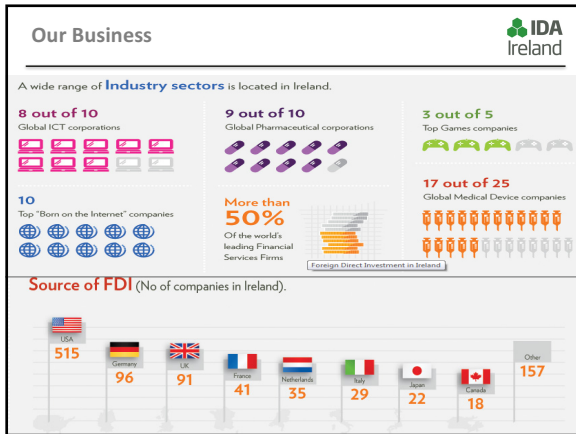
IDA client companies contributed:

- €115 billion** in estimated exports*
- €19 billion** to the Irish economy, including corporation tax**
- €6.9 billion** in payroll**

Total number of IDA companies* **1,200**


200,000 direct employment**

You'll be in good company - some companies who have made Ireland their home in Europe.








How IDA Ireland can help...

Phases of Development	Suite of Support Services provided by IDA
Evaluation	<ul style="list-style-type: none"> Organise Site-Visits to Ireland Provide "Due Diligence" information Open doors to the business community in Ireland
Decision & Implementation	<ul style="list-style-type: none"> Grant Aid (Regional Employment, R&D, Training) Assistance with Property & Office solutions Press & PR
Continuous "After-Care"	<ul style="list-style-type: none"> Introductions at Government level Employee Work Permit / Visa support Influencing Government on behalf of industry




IDA Financial Support



	<p>Employment Grant</p> <ul style="list-style-type: none"> Up to 20% of the average estimated salary for new jobs created 	
	<p>Capital Grant</p> <ul style="list-style-type: none"> Up to 10% support on capital expenditure for buildings or equipment 	
	<p>RD&I Grant</p> <ul style="list-style-type: none"> Up to 25% of eligible expenditure on R&D projects 25% Tax Credit available from the Irish Revenue 	
	<p>Training Grant</p> <ul style="list-style-type: none"> 25% support available for very specific training 60% support available for general (operation transitioning) training 	


*All State Aid is available and eligible under European Union State Aid Rules. State Aid is only available within these parameters and subject to IDA Ireland Board Approval.

Challenging Global Environment



- Brexit**
- New US Administration**
- OECD BEPS**
- Border Adjustment Tax**

Patrick McGee
 VP, Engineering & Industrial Technology
 IDA Ireland
 345 Park Avenue
 New York, NY 10154
 +1 212-750-4300
Patrick.mcgee@ida.ie
[linkedin.com/in/patrickmcgee3](https://www.linkedin.com/in/patrickmcgee3)



@IDAIreland
www.linkedin.com/company/ida-ireland
www.youtube.com/InvestIreland

